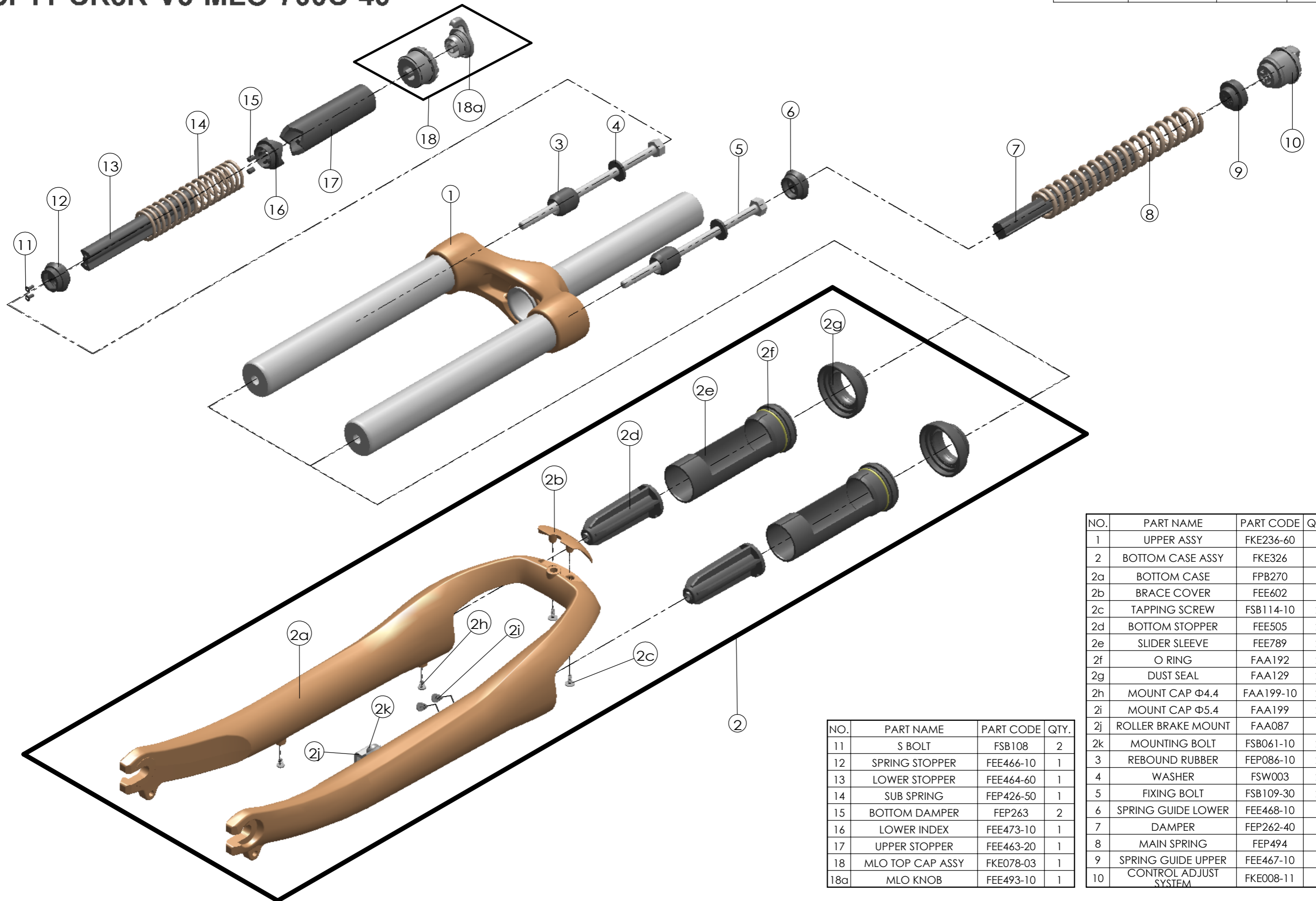


Date	2010.2.10	Version	1
Amended			



NO.	PART NAME	PART CODE	QTY.
11	S BOLT	FSB108	2
12	SPRING STOPPER	FEE466-10	1
13	LOWER STOPPER	FEE464-60	1
14	SUB SPRING	FEP426-50	1
15	BOTTOM DAMPER	FEP263	2
16	LOWER INDEX	FEE473-10	1
17	UPPER STOPPER	FEE463-20	1
18	MLO TOP CAP ASSY	FKE078-03	1
18a	MLO KNOB	FEE493-10	1

NO.	PART NAME	PART CODE	QTY.
1	UPPER ASSY	FKE236-60	1
2	BOTTOM CASE ASSY	FKE326	1
2a	BOTTOM CASE	FPB270	1
2b	BRACE COVER	FEE602	1
2c	TAPPING SCREW	FSB114-10	2
2d	BOTTOM STOPPER	FEE505	2
2e	SLIDER SLEEVE	FEE789	2
2f	O RING	FAA192	2
2g	DUST SEAL	FAA129	2
2h	MOUNT CAP Φ 4.4	FAA199-10	2
2i	MOUNT CAP Φ 5.4	FAA199	2
2j	ROLLER BRAKE MOUNT	FAA087	1
2k	MOUNTING BOLT	FSB061-10	2