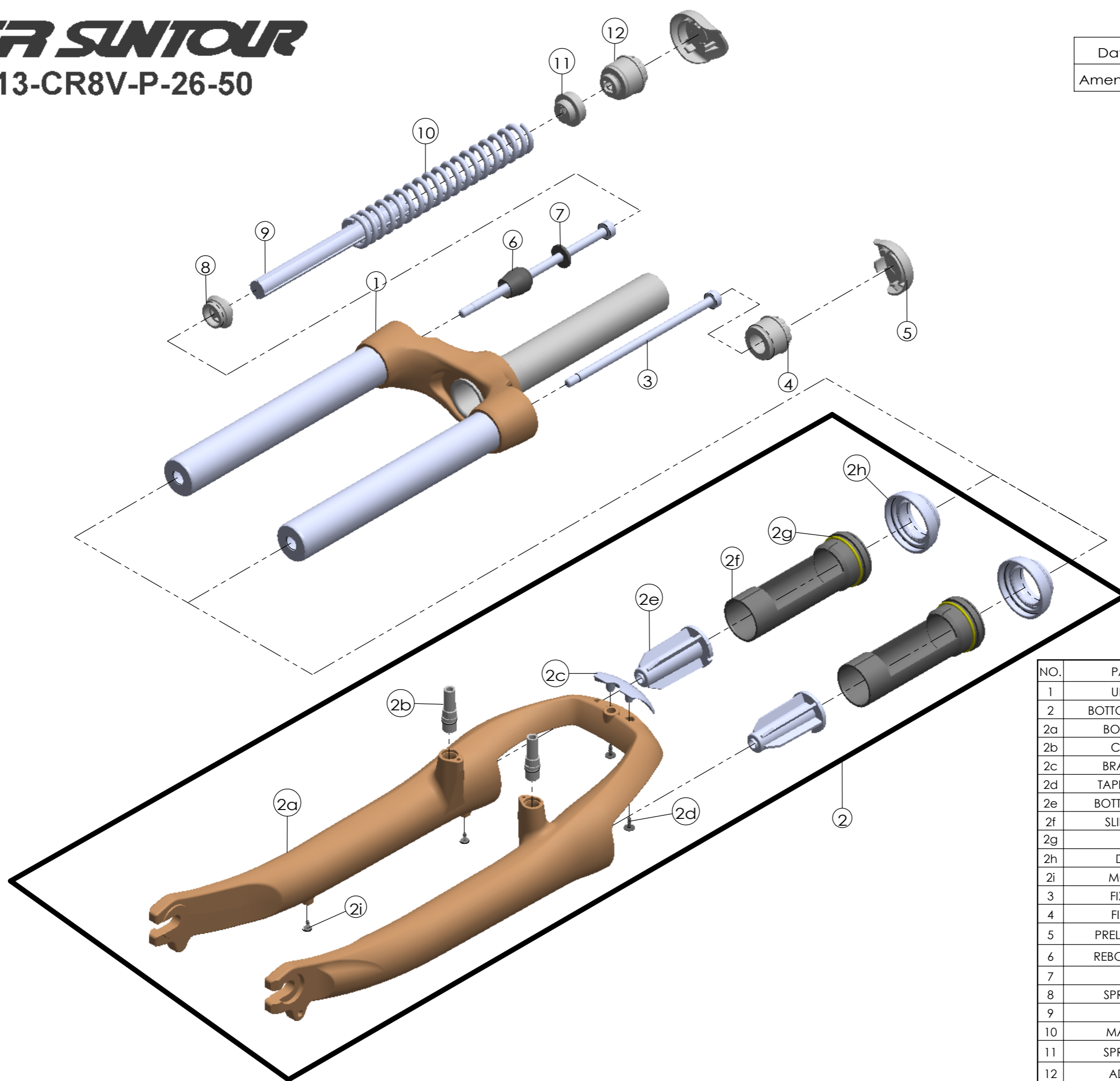


Date	2013.5.14	Version	1
Amended			



NO.	PART NAME	PART CODE	QTY.
1	UPPER ASSY	FKZ022-05	1
2	BOTTOM CASE ASSY	FKE423-01	1
2a	BOTTOM CASE	FPB349	1
2b	CANTI BOSS	FSB241-16	2
2c	BRACE COVER	FEE602	1
2d	TAPPING SCREW	FSB114-10	2
2e	BOTTOM STOPPER	FEE505-10	2
2f	SLIDER SLEEVE	FEE789	2
2g	O RING	FAA192	2
2h	DUST SEAL	FAA129	2
2i	MOUNT CAP	FAA199-10	2
3	FIXING BOLT	FSB111-10	2
4	FIXING CAP	FEE810-40	1
5	PRELOAD COVER	FEG139	2
6	REBOUND RUBBER	FEP086-10	1
7	WASHER	FSW003	1
8	SPRING GUIDE	FEE468-10	1
9	DAMPER	FEP262-40	1
10	MAIN SPRING	FEP418	1
11	SPRING GUIDE	FEE467-10	1
12	ADJUST CAP	FKE213-00	1