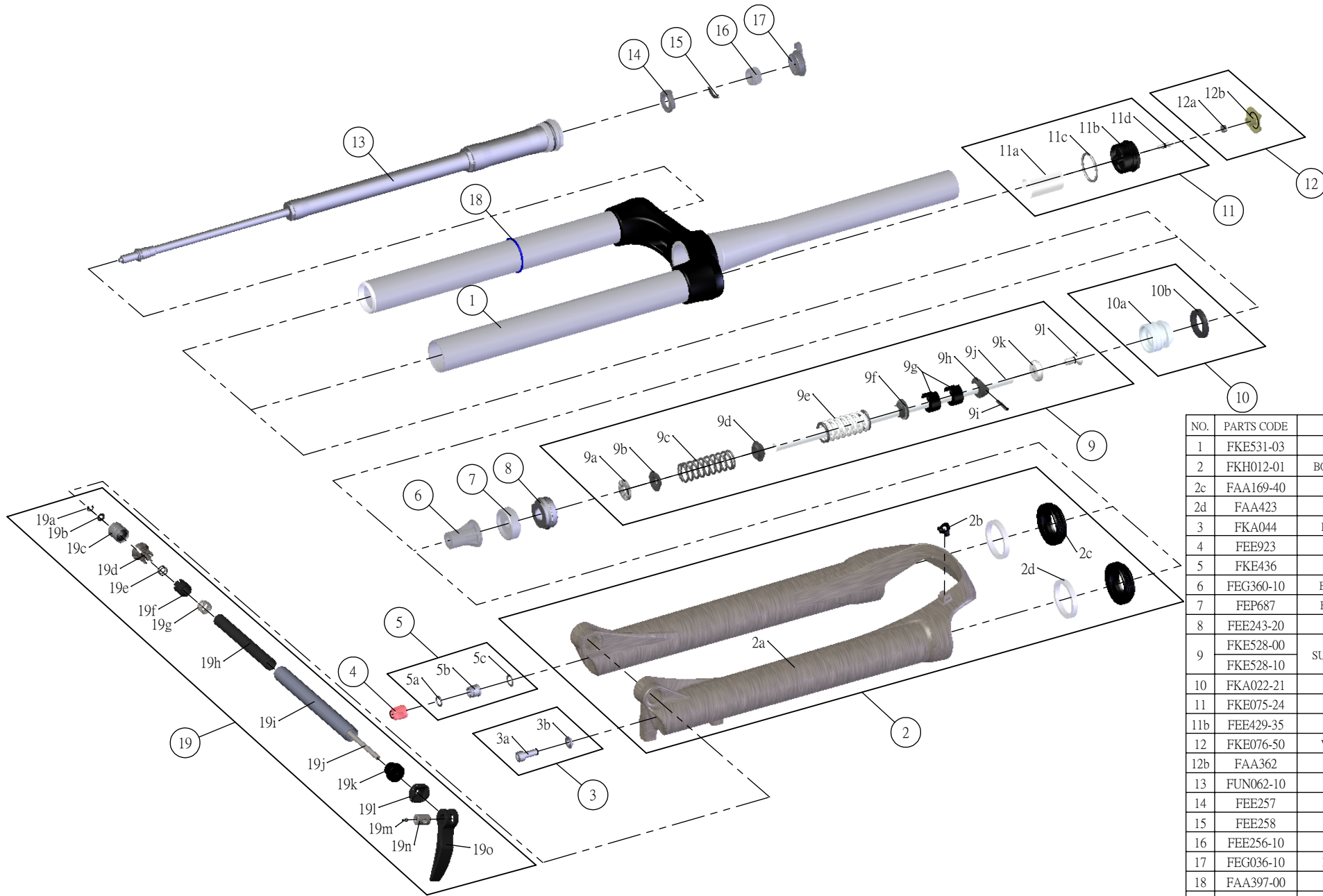


# SUNTOUR

## SF17-AXON-DS-LOR-15QLC32-CTS-27.5-

Date	2016.02.02	Version	1
Amended			



NO.	PARTS CODE	PARTS NAME	120	100	QT
1	FKE531-03	UPPER ASSY	*	*	1
2	FKH012-01	BOTTOM CASE ASSY	*	*	1
2c	FAA169-40	DUST SEAL	*	*	2
2d	FAA423	OIL WIPER 32	*	*	2
3	FKA044	FIXING BOLT SET	*	*	1
4	FEE923	REBOUND KNOB	*	*	1
5	FKE436	FIXING NUT SET	*	*	1
6	FEG360-10	BOTTOM STOPPER	*	*	1
7	FEP687	BOTTOM BUMPER	*	*	1
8	FEE243-20	FORK NOSE	*	*	1
9	FKE528-00	SUPPORT TUBE ASSY	*	*	1
	FKE528-10		*	*	1
10	FKA022-21	PISTON UNIT	*	*	1
11	FKE075-24	AIR CAP ASSY	*	*	1
11b	FEE429-35	AIR CAP	*	*	1
12	FKE076-50	VALVE CAP ASSY	*	*	1
12b	FAA362	VALVE CAP	*	*	1
13	FUN062-10	LOR UNIT	*	*	1
14	FEE257	CLICK HOLDER	*	*	1
15	FEE258	ADJUST CLICK	*	*	1
16	FEE256-10	ADJUST CORE	*	*	1
17	FEG036-10	LOCK OUT KNOB	*	*	1
18	FAA397-00	O RING	*	*	1
19	FKA069-25	15QLC32 AXLE SET	*	*	1